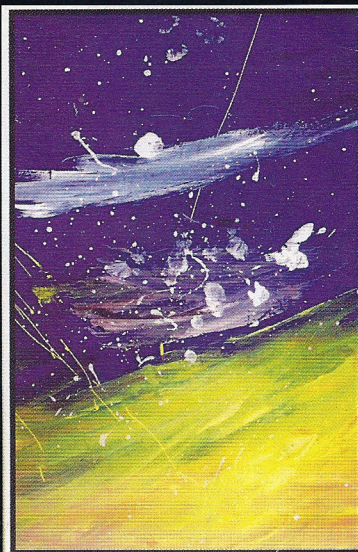




THE PATH

At times we can't find our way. When we rise slowly and seek, our path is divinely lit.

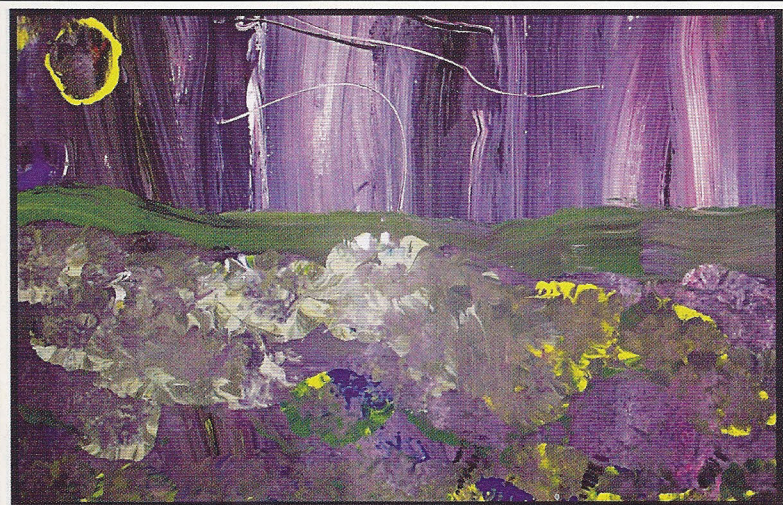
Trent
TRENT ALTMAN



GOD'S UNIVERSE

The universe holds the key to our abundance. The moon set in motion with the stars reveals that all things are possible. The gift is ours if we notice.

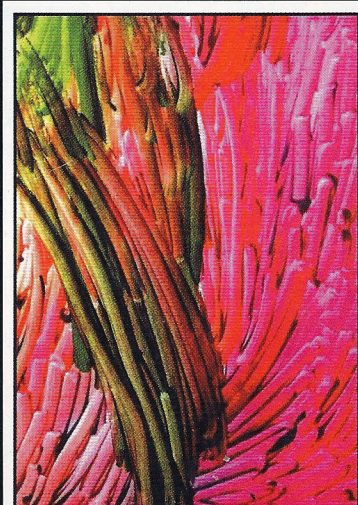
2/500
Trent
TRENT ALTMAN



A MOONLIGHT WALK

In the dark of night, we're uncertain where to turn. When we gaze peacefully at the light, we trust, and the direction is revealed.

20/500
Trent
TRENT ALTMAN



Flower of Gratitude
Trent painted strokes of pink and green that resemble petals in a flower. The petals are reaching out in the light. Each petal represents gifts of kindness, patience, or a helping hand offered by others at a time when Trent and his mother needed it most.

Trent
Trent Altman

Trent Altman is a 26 year-old man with autism. At age 23 he started living independently, with the help of a job coach, community coach, a roommate and a respite worker. Trent started painting just two years ago. Painting quickly surfaced as an activity that helped Trent overcome major challenges associated with living apart from his family. While autism has significantly limited Trent's verbal communication, it has not diminished his creative talent. His paintings reflect a deep connection with his inner feelings, a freedom from convention and an almost awe-inspiring sense of something greater than the limitations his autism experience would suggest. This newfound means of expression has increased Trent's self-awareness, confidence, and understanding of his world. It has become a healing and life enhancing experience for him and those who come in contact with his art. For ordering information, see Find It, page 49.

Additional paintings can be viewed at www.independencebound.com.

AUTISM

ASPERGER'S
DIGEST MAGAZINE

www.autismdigest.com

721 W. Abram Street
Arlington, TX 76013